

Plotting and analyzing a football match with all players' positions.

You can plot and analyze the positions of a complete team on a field with the following tools:

- a) the file excel containing the Latitude and Longitude of any player
- b) the utility "Excel to Google Earth" that you find on the website Earth Point (www.earthpoint.us): it is free for educational purpose, you can write to Bill Clark, clicking on "contact", he will be glad to give you a 1-year access for free if you specify the name of your school, the free access will be renewed any year for free. Anyway for a limited number of values the use is free in anyway. Since we need at most 11 positions at a time, it will work no matter if you ask the free access or not.
- c) The program Google Earth

Instruction:

You produce an excel file with at least 2 columns, 1 for Latitude, one for longitude. For instance you list the 11 position of latitude and longitude of all the players at some time.

At the top of these columns you have got to have a cell containing the exact words "Latitude", and "Longitude".

On www.earthpoint.us you select "Excel to Google Earth", select your Excel file, and click on "View on Google Earth". You will the players' positions plotted on the location they were playing football, on Google Earth.

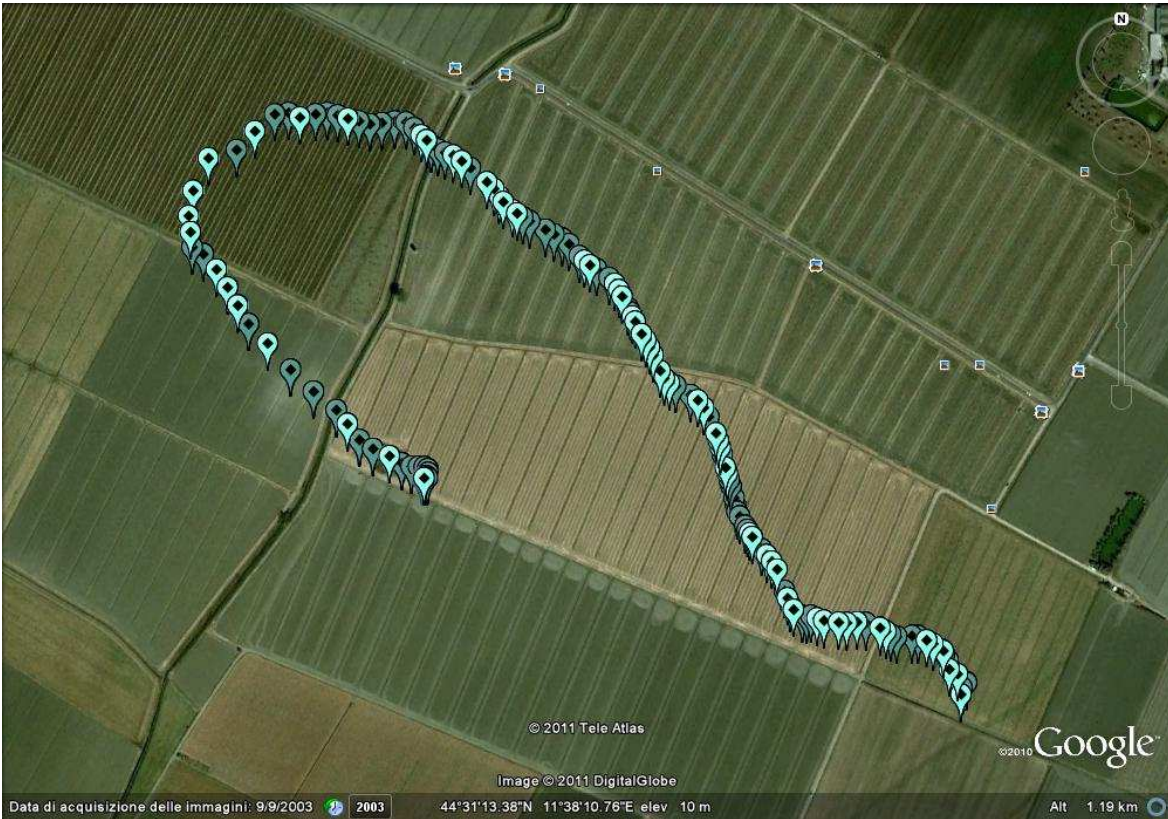
The "View on Google Earth can produce also a KML file you can use for any purpose: In the "Places" window of Google Earth, right-click the folder "Earth Point Excel To KML", and from the pop-up menu, select "Save As". You will find the file in the directory you specify.

Google Earth Icon: If you include in your Excel file a column starting with the word "Icon", and in the second cell below you write the reference number of the icons offered by "Earthpoint" website, you can even have in Google Earth plot the football player icon!

Further developments:

- a) Match evolution: you can put a number of these files one after the other, watch it like a film, and analyze how the team in its entirety moved and behaved during a time period of the match.
- b) Area covered by a team: after producing the Google Earth vision of the team's positions, you choose the utility "Polygon Area", also available as the previous one. Following the easy instructions you can calculate the area enclosed by the players' positions, to understand if they were playing as a scattered or a curled up team.

Included some examples hereafter:



Earth Point

Tools for Google Earth

[Sign In / Buy Subscription](#) [Contact](#)

- Earth Point
- Home
- Sign In / Buy Subscription
- Worldwide Utilities
 - Excel To Google Earth**
 - Coordinate Grids
 - Polygon Area
 - Convert Coordinates
 - Batch Convert
- USA Utilities
 - Township & Range
 - BLM Grid
 - Search By Description
 - Search By Lat Long
 - Alternate Grid
 - Louisiana Twp & Rng
 - Louisiana Original PLSS
 - California Twp & Rng
 - California Grid
 - Search By Description
 - Search By Lat Long
 - Texas Land Survey
 - Abstract Grid

Excel To KML - Display Excel files on Google Earth.

A user account is recommended for the features on this web page.

Import a spreadsheet of lat/long coordinates to Google Earth. Pop-up balloons, icons, and paths are easily created from the spreadsheet data.

Latitude and Longitude are all that is needed to create a basic display on Google Earth. Add a Name, Description, and an [Icon](#) for a professional presentation.

Advanced features support [GPS tracks](#), [Time Sliders](#), and [Grid Coordinates](#).

To get started, read the [Quick Start](#) instructions or download the sample data [ExcelToKmlDemo.zip](#).

NEW: AppendDataColumnsToDescription accepts a list of column names.

Select an Excel file (xls,xlsx,xlsm,xlsb,txt, or csv)

Nessun file selezionato.



	A	B	C	D	E
1	Latitude	Longitude	Name	Description	Icon
2	43°36'34.86"N	116°12'23.30"W	BAM	Art museum	12
3	43 36 33.22	-116 12 18.40	Roses	Nice garden	111
4	43.608879028	-116.20320277	Zoo	Great visit	186

Sample points plotted onto Google Earth.

Enhanced feature. [What is this?](#)

Free. User account is not needed.