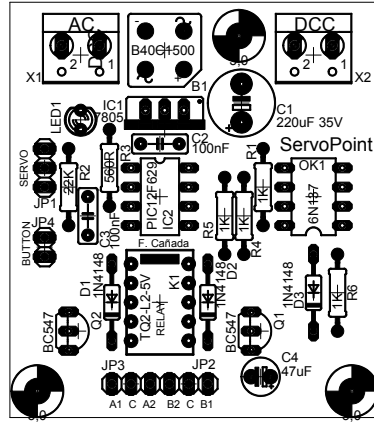
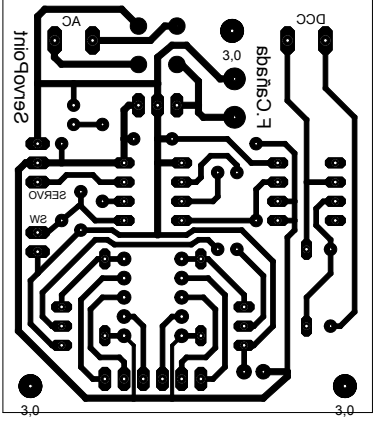


- MOUNT-HOLE3.0
H1
- MOUNT-HOLE3.0
H3
- MOUNT-HOLE3.0
H2

ServoPoint
<http://www.fut.es/~fmco>

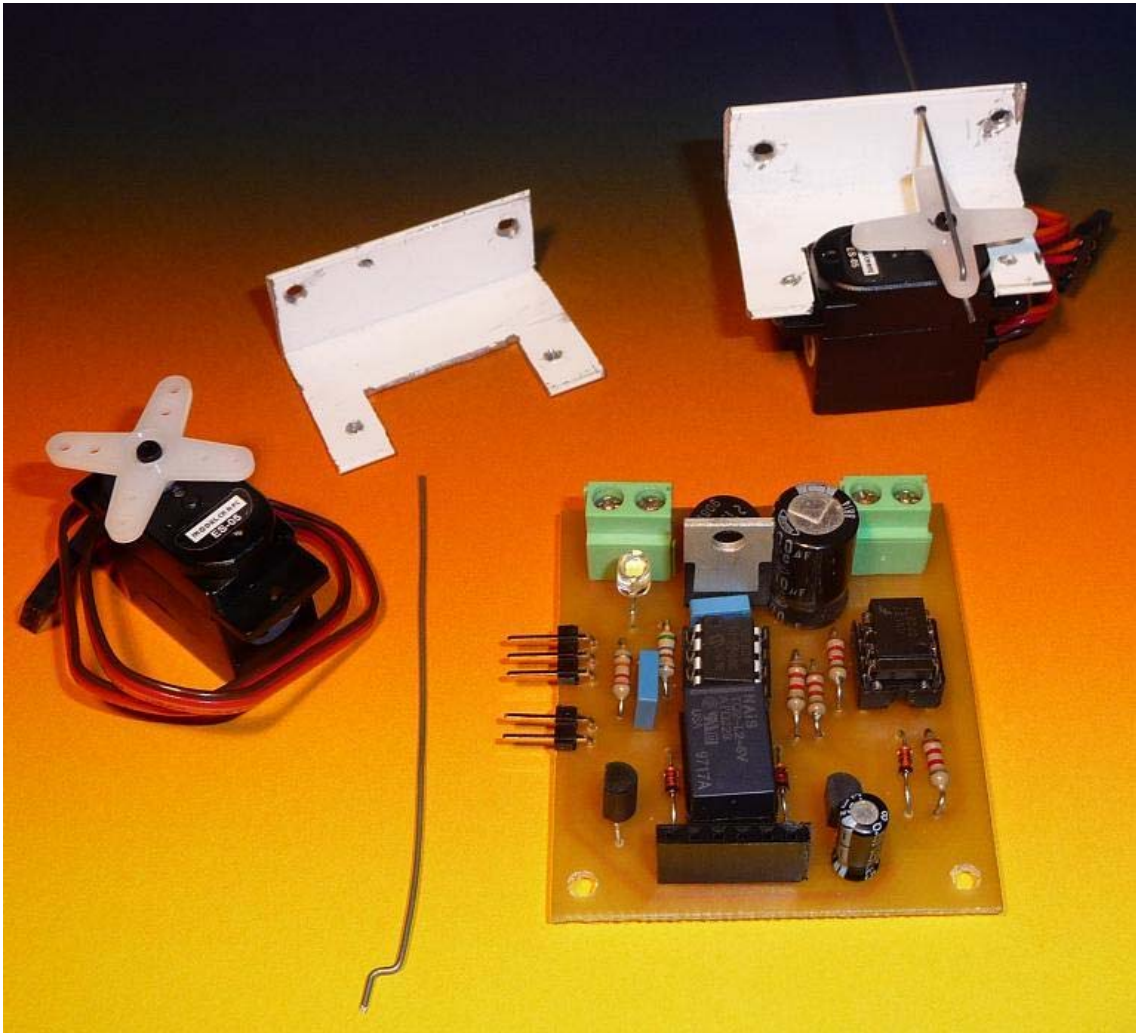




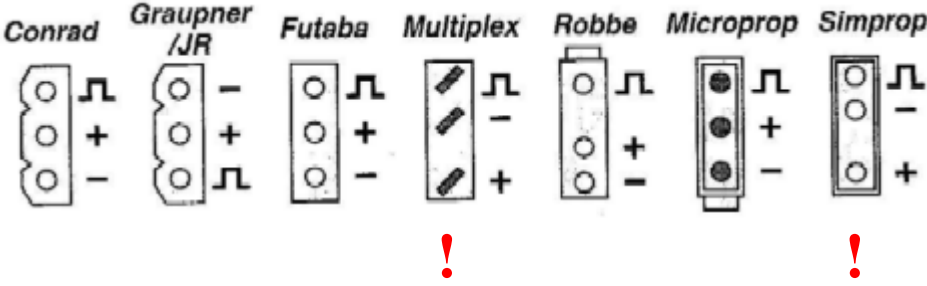
ServoPoint_Opto Partlist

Part	Value	Device
B1	B40C1500	punte diodos / rectifier
C1	220uF 35V	condensador / capacitor
C2	100nF	
C3	100nF	
C4	47uF	
D1	1N4148	diodo / diode
D2	1N4148	
D3	1N4148	
IC1	7805	regulador voltage / voltage regulator
IC2	PIC12F629	
JP1		conectores / connectors
JP2		
JP3		
JP4		
K1	TQ2-L2-5V	rele biestable / biestable relay
LED1	LED3MM	LED
OK1	6N137	optoacoplador / optocoupler
Q1	BC547	transistor
Q2	BC547	
R1	1K	resistencia / resistor
R2	22K	
R3	560R	
R4	1K	
R5	1K	
R6	1K	
X1		borna / connector
X2		

F. Cañada
<http://www.fut.es/~fmco>



ServoPoint_Opto con miniservo para mover desvíos
 ServoPoint_Opto with a mini-servo to move turnouts





LED		Valores	Descripción
○	LED apagado	---	Funcionamiento normal
☀	LED parpadea lento	1...2048	Programación de la dirección del servo
●	LED siempre encendido	1..50	Programación del recorrido del servo
☀	LED parpadea rápido	1..20	Programación de la velocidad del servo



LED		Values	Description
○	LED off	---	Normal operation
☀	LED flashes slow	1...2048	Programming the address of servo
●	LED always on	1..50	Programming the range of servo
☀	LED flashes fast	1..20	Programming the speed of servo



LED		Valeur	Description
○	LED éteinte	---	Fonctionnement normal
☀	LED clignote lentement	1...2048	Programmation de l'adresse du servo
●	LED s'allume toujours	1..50	Programmation de parcours du servo
☀	LED clignote rapidement	1..20	Programmation de la vitesse du servo