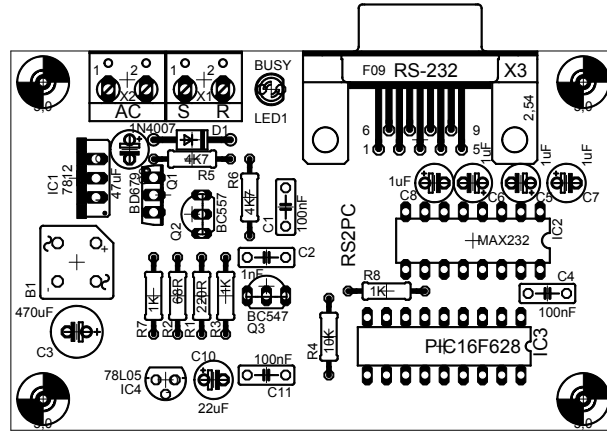
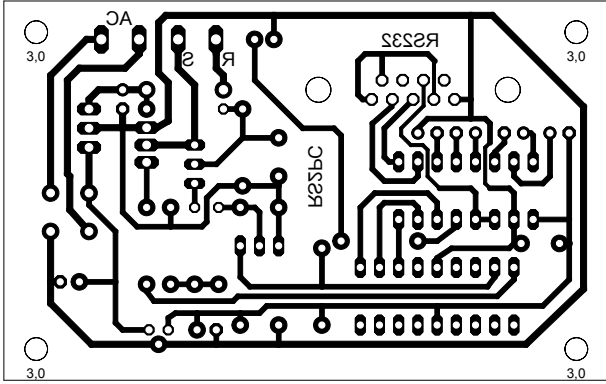


RS2PC
F. Cañada
<http://www.fut.es/~fmco>

H2
MOUNT-HOLE3.0

MOUNT-HOLE3.0
H3

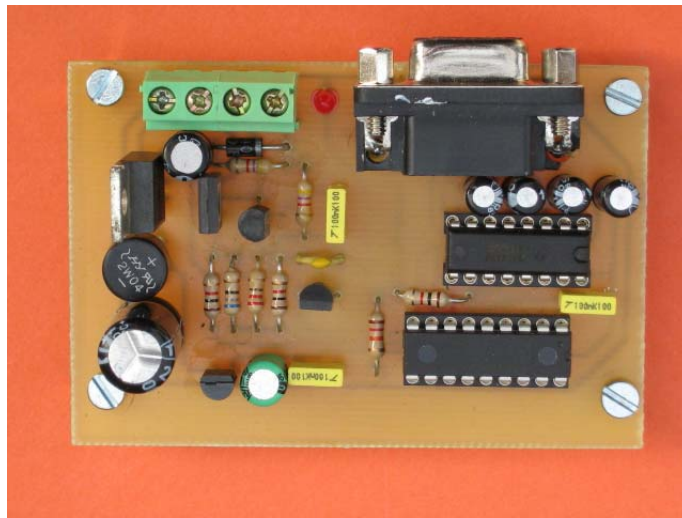




RS2PC Partlist

Part	Value	Device
B1	B40C1000	puente diodos / bridge rectifier
C1	100nF	condensador / capacitor
C2	1nF	
C3	470uF	
C4	100nF	
C5	1uF	
C6	1uF	
C7	1uF	
C8	1uF	
C9	47uF	
C10	22uF	
C11	100nF	
D1	1N4007	diodo / diode
IC1	7812	regulador voltage / voltage regulator
IC4	78L05	
IC2	MAX232	circuitos integrados / ic
IC3	PIC16F628	
LED1	LED3MM	
Q1	BD679	transistor
Q2	BC557	
Q3	BC547	
R1	220R	resistencia / resistor
R2	68R	
R3	1K	
R4	10K	
R5	4K7	
R6	4K7	
R7	1K	
R8	1K	
X1		bornas / connector
X2		
X3		conector DB9 hembra / DB9 Female

<http://www.fut.es/~fmco>



RS2PC montado / mounted

Layout connection:	
Lenz LI100/LI101	
Serial port:	COM1
Baud rate:	19,200 baud
LI100 connections uses	hardware flow control (recommended)

Configuración del programa de PC para usar el RS2PC
Settings on PC program to use RS2PC